

A photograph of a rustic cabin nestled in a forest. The cabin features a prominent stone chimney and a metal roof. A large tree stands in the foreground, and a pile of firewood is visible on the left. The ground is covered in fallen leaves.

Preserving a legacy

Cabin retreats in the Georgia mountains take on a historic touch

By Ronda Mollica « Photos by Franklin Schmidt « Styling by Esther Schmidt



What's the ideal vision of Appalachia? For the owners of Anderson Creek Retreat near Ellijay, Georgia, the designs were influenced by thoughts of soft green mountains, clean flowing creeks, and small study cabins tucked under ancient trees as they transformed their family's 1,500-acre homestead into a historic community retreat.

"Our family is fortunate to have a rich and diverse piece of land in the southern Appalachian Mountains," says George David of Anderson Creek Retreat. "My great-grandfather Joseph Anderson settled on Anderson Creek in

the 1840s. Ever since then we have been preserving a legacy."

Anderson Creek Retreat property owners not only own these cozy retreats, they protect natural land, wildlife, and waterways. "We've set aside the ruins of

Reclaimed barnwood (right) was used in place of Sheetrock in many parts of the home.
A combination of antiques and new furnishings (opposite) decorate the cozy living room.
A stone walkway (below) leads to the Appalachian style log home.





“Anderson Creek Retreat encourages the regional house styles that typically requires the use of native materials, simple detailing, and common-sense features.”

early settler homesteads as parks and have established preserves that include the botanically rich watershed of Anderson Creek,” says David.

This history and preservation is what Bill Calton had in mind when he decided to buy a piece of land in this community and build a simple — but by no means plain — log home in the woods. Calton, who lives about 75 miles away in Atlanta, says it’s like traveling to the past.

“The exterior of the home looks over 100 years old by design,” says Calton.

“The windows have true divided lites made of wood, not aluminum, and the logs are square and irregularly sized as if they were hand hewn from the surrounding woods.”

Architectural guidelines encourage cottage designs that respect the architectural heritage of the region, says Calton. “Anderson Creek Retreat encourages the regional house styles that typically requires the use of native materials, simple detailing, and common-sense features,” he says.

The Calton cottage was built on





An old-fashioned Dutch door (left) leads to the screened back porch.

The first floor master bedroom (below) has a distinctive Western flavor with rawhide covered lamps and Southwest style bedding.



3.5 acres and is a typical Appalachian home: heavy timber log walls with chinking and dovetailed corners (the package was provided by Hearthstone Inc. of Dandridge, Tennessee). The story-and-a-half structure features the great room and living area on the first floor and cozy loft bedrooms on the second floor.

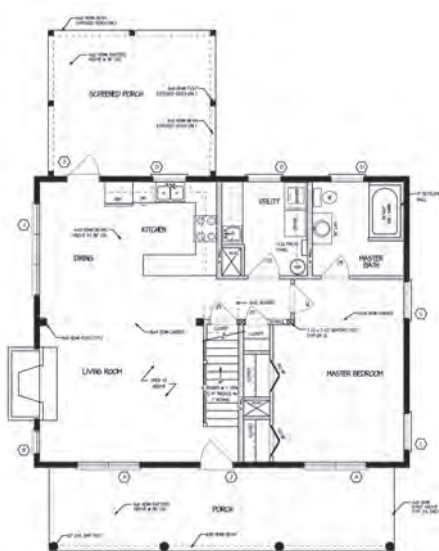
Calton's weekend home is built to feel like a 150-year old cabin. A Dutch rear entry door, wide-plank knotty pine flooring, the use of barnwood rather than Sheetrock, a 42-inch-wide

fireplace, and scaled-down proportions "make you feel like you've stepped back in time," says Calton. "But with luxuries such as air conditioning and a modern kitchen that make the living easy."

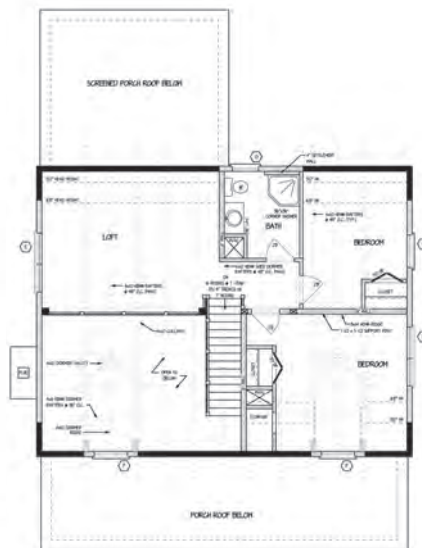
A full front porch provides a welcoming front entry for guests to arrive, while a screened-in back porch is ideal for cool drinks on a warm night.

"I love the hustle and bustle of city life in Atlanta and travel all over the country," he adds, "but I look forward to my weekends in the woods where life is meant to slow down." 🏡

Floor plan



First Floor



Second Floor

RESOURCES

Square footage: 1,650

Bedrooms: 3

Bathrooms: 2

Producer: Hearthstone Inc., Dandridge, TN. Circle 74 on the Reader Service Card for free information.

Architect: Jim Winer, Menefee and Winer Architects, Atlanta

Developer: Anderson Creek Retreat, Ellijay, GA

Contractor: Kitchen Chair Home-builders, Ellijay, GA